



**H O D G S O N**  
**W I G W A R M**  
**P O R T A B L E   H O U S E S**  
**F O R   P O U L T R Y   A N D**  
**P E T   S T O C K**





## ADVANCE IN PRICES

---

The prices in this catalog were made up in the fall of 1918, since which time prices for all materials have advanced very materially. For this reason we were absolutely forced on July 15 to advance the prices in this catalog 20%.

There is no doubt but that prices will continue to advance, and it would be wise to order your house early and have it erected this year even if you are not to use it until next season.

Lumber is bound to increase in cost, as the supply is not taking care of the present demand, and the demand is increasing constantly; we believe there is no doubt but that there will be a shortage for some time to come.

**E. F. HODGSON CO.**

ESTABLISHED 1892

A full line of Poultry Appliances, made in a most thorough manner and complete in every detail for those wishing the best the market affords

---

---



HODGSON  
WIGWARM  
Portable  
Houses



---

---

For Poultry and Pet Stock

---

---

TWENTY-SEVEN YEARS of manufacturing these goods have taught us the best way to make them and the materials best suited to enter into their construction. We stand back of every article we sell, for we know they are the best of their kind to be found anywhere.

### Completed Portable Coops and Houses

All the coops and houses shown in this catalog are made complete in every detail, leaving nothing for the purchaser to do but to screw or bolt together the few sections of which each article consists. We furnish directions and the necessary hardware to erect them, so that anybody of ordinary ability can do this. All doors, windows, screens, etc., are fitted in place, and all coops and houses are well painted two coats of the very best lead paints. The roofs are made absolutely waterproof, and will remain so for years, without the use of roofing paper or ready roofings, which are an eyesore at best and last but a few years.

#### TERMS

Cash to accompany orders or satisfactory references given. Money should be sent by check, post office, bank or express money orders, or by registered mail. Prices subject to change without notice. Make all checks payable to

## E. F. HODGSON CO.

BOSTON OFFICE and SHOW ROOM 71-73 FEDERAL STREET

NEW YORK OFFICE and SHOW ROOM  
6 EAST 39th STREET, NEAR 5th AVENUE

FACTORY and OUTDOOR EXHIBIT  
DOVER, MASS.

Copyright 1919 by E. F. Hodgson Co.



## Wigwarm Outdoor Brooder



### OUTDOOR BROODER

Price \$20.00. Size 3 x 5 ft. Capacity 50 to 100 chickens or ducklings  
This brooder can be safely operated out-of-doors in zero weather, uses little oil,  
and will raise every healthy chick

entire hover can be lifted out of the brooder or swung back on detachable hinges. Fumes from the lamp cannot enter among the chickens, as they pass out through the crosspipe, shown in the top picture. The Brooder is roomy, well lighted and ventilated, and thoroughly protected from the weather by a roof covered with galvanized iron.

### Dr. Prince T. Woods, of Silver Lake, Mass.,

has an international reputation as an authority on practical poultry husbandry. During the winter of 1912, the coldest winter on record, he raised over 3,500 chicks in 20 WIGWARM Brooders out of doors, unprotected. Dr. Wood writes as follows:

"I chose the Wigwarm Brooder because I knew it to be a practical fresh air brooder that combines

warm fresh air heat with hot water heat. No difficulty was experienced running the Wigwarms out of doors in below zero weather, although the location was bleak and windswept. The first lot of White Rock chicks went into Brooder No. 1 on the last day of February. Of this lot every chick was raised. Although we had a number of below zero nights, the chicks were always comfortable and grew rapidly into strong, vigorous birds."



### WIGWARM OUTDOOR BROODER WITH YARD

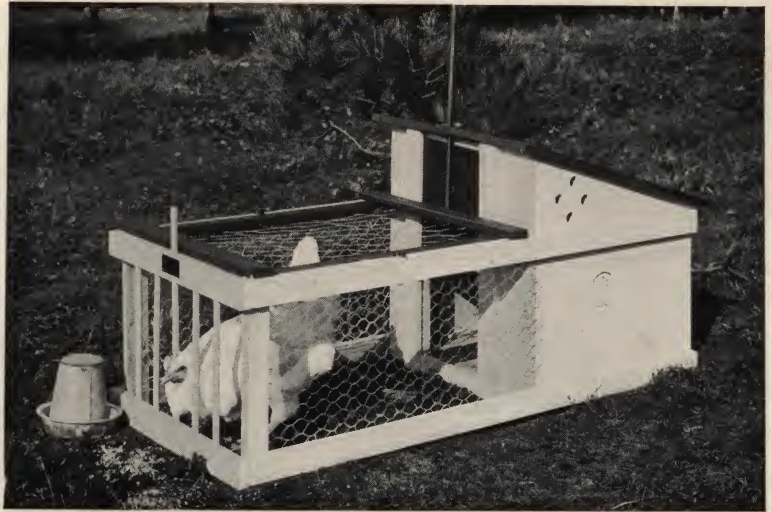
Price of Brooder \$20.00. Yard \$5.00. Total \$25.00  
Yard 3 x 8 ft.

This yard is made of red cedar, well painted, and covered with 1 inch netting on the sides and 1 inch netting on top. Top is hinged to raise as shown. Brooder and yard are easily moved to fresh ground



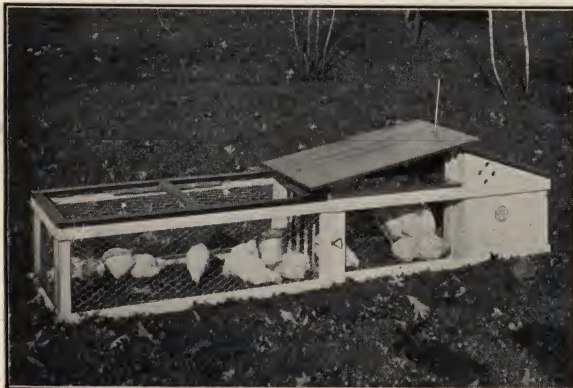
## Wigwarm Setting and Brood Coop

**T**HIS coop is made up of a half dozen sections which can be easily fastened together in a few minutes' time. The material used is white matched pine and it is neatly painted. The floor, roof and top of the yard are easily removed, and the hen can feed through the open end of the yard without tipping over her food and water.



WIGWARM SETTING AND BROOD COOP  
Price \$4.50 each. Size 2 x 4 ft.

Folds flat when shipped. We can furnish a wire end to yard, making this coop an excellent hutch for rabbits or guinea pigs. The use of this coop will mean to you less loss of chickens and better hatches with little bother



WIGWARM SETTING AND BROODING COOP  
Price complete \$8.25. Price of Coop \$4.50

Extended yard \$2.75. Shelter \$1.00. Size 2 x 8 ft.  
This Coop is also used as a hutch for rabbits or guinea pigs

—acknowledged by all the State Experiment Stations to be far better than glass, giving ample protection and perfect ventilation without drafts.

Although these coops are generally used for growing stock, they are often found very useful for a hospital for sick fowl, or to break up setters. They are also used to separate cockerels, or to shelter fowl that are moulting, which if allowed free range will quickly take on their new feathers and be in fine laying condition before cold weather.

The coops have a removable floor, two roosts and a hinged corrugated red cedar roof. They are made in six sections and can be put together in ten minutes' time. The exterior is neatly painted.

## The Wigwarm Colony Coops

For Growing Chickens or Ducks

**T**HESE coops are for growing chickens (or ducks) after they leave the brooder or mother hen, as the chickens should have an opportunity to roost as soon as they show that tendency—from six to eight weeks old. The coops are perfectly weather proof, well ventilated, warm and animal proof. The open front is protected by the canvas covered frames



WIGWARM COLONY COOP

Price 3 x 3 ft. \$11.00. Capacity 20 chickens or ducks  
Price 3 x 6 ft. \$14.30. Capacity 40 chickens or ducks

### YARDS FOR COLONY COOPS

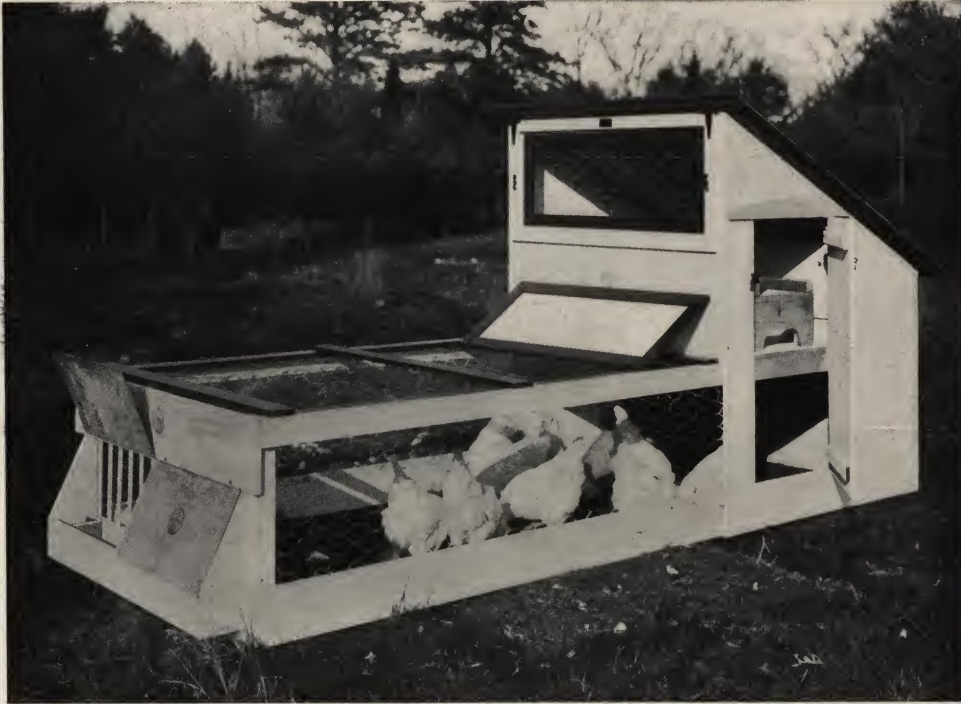
Yard for 3 x 3 ft. Coop is 3 x 8 ft. \$6.60.  
Yard for 3 x 6 ft. Coop is 6 x 8 ft. \$8.80.



## Wigwarm Colony Laying House No. 0

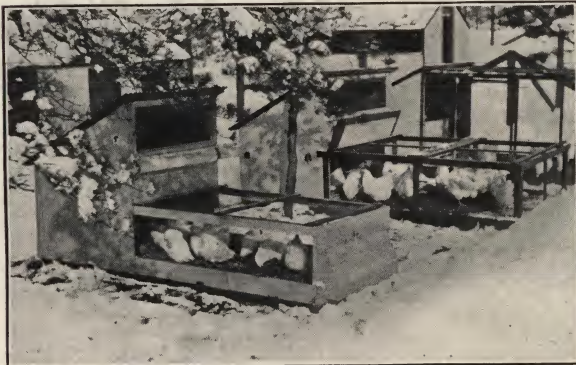
WITH over twenty years' experience and numerous experiments, this poultry house has proven to be the most profitable for egg production and popular style for a dozen

with nests. The lower part gives a yard and scratching shed, in which are located a convenient water fountain, that is filled from the outside, and a dry mash hopper or feed trough,



Size of House 4 x 4 ft., Run 4 x 10 ft. Height 5 ft. Capacity 12 Hens. Price \$27.50  
Complete with nests, roosts, fountain, feed hopper, yard, etc. It is easily moved to fresh ground by one man. The eggs are gathered and hen watered at the rear, while the feed hopper is in front and protected.

hens whether used in the back yard or in large numbers on farms. Its two-story feature gives in the upper part a roosting room that is warm and free from drafts, with two removable roosts



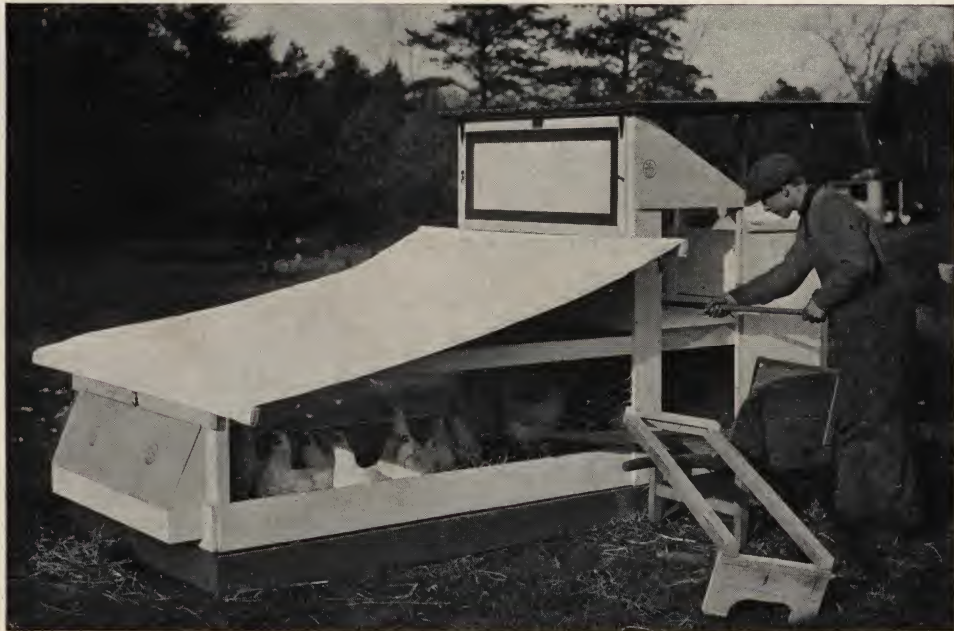
No. 0 Houses are practical summer or winter and will insure you of a good egg yield at all times

that is protected from the weather and very easy of access. The yard can be protected from storms as well as the hot sun by a conveniently arranged heavy waterproof canvas cover, as shown in the illustration on next page, which we furnish if desired. The ease with which the house is cleaned out is shown by the illustration—simply a hoe with a wheelbarrow being used. All the work of feeding, gathering the eggs and watering the fowl is done from the outside, making it quickly and easily accomplished. The house is easily moved to fresh ground, thus keeping the yard sanitary with minimum labor.

One man can give better care to a large number of hens and obtain a larger percentage of eggs with these houses than with any other style. It is thoroughly well made with matched white pine sides, a corrugated *red cedar* roof, and painted two coats. It is shipped "knocked down" in eight sections that can be fastened together by anyone in a half hour's time.



## Wigwarm Colony Laying House No. 0 (With Storm cover)



No. 0 HOUSE WITH STORM COVER. Price, with Storm Cover, \$34.65

For shelter from storms and sun. The house is being cleaned with a hoe, the roosts are removed and the roof is hinged to open. This house is shown set up 4 inches on a board or joist frame and the yard is filled in for winter use. The Storm Cover is a heavy waterproof canvas, so arranged as to roll up out of the way when not in use. It extends a foot to each side of the yard to give ample protection.

### In Zero Weather

1925 CHESTNUT STREET,  
PHILADELPHIA, PA.

*"Some time ago I wrote you a letter asking your advice in the matter of risking large comb birds in your No. 0 Colony Laying House for fear of frost bite in zero weather. I thought you would be in-*

*terested in learning that I acted upon your advice, and with the temperature at zero the birds confined in these two houses were the only ones of my flock who escaped frost bite. I have in use five different types of houses, varying in capacity from twenty to seventy-five birds, so that this makes a rather interesting comparison."*

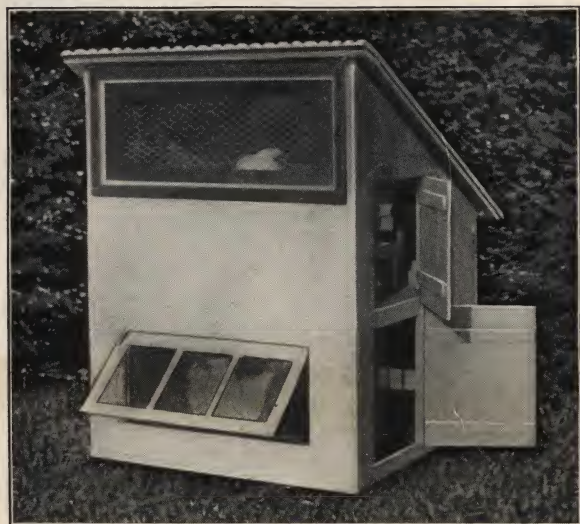
HAROLD G. GOLDBERG.



A few of the many poultry houses we have exhibited at the Grand Central Palace and Madison Square Garden Poultry Shows, New York City. Our exhibits have covered an area of over an acre of space and housed nearly 1000 hens at a time.



## Wigwarm Colony Laying Houses Nos. 1 and 2



WIGWARM COLONY LAYING HOUSE No. 1  
 Size 4 x 4 ft., 5 ft. high Price \$22.00  
 Capacity 12 hens if given a yard or 8 if no yard

### No. 1 Colony Laying House

THIS house is similar to the No. 0 house described on page 84 except that it is closed in under the floor and has no yard. In this house the hens can be kept confined or given a yard any size desired. If kept confined it is well not to keep over eight hens in it, but with a yard twelve hens will do well. Both house and hens are taken care of from the outside, making the care easy and agreeable. The two story arrangement gives the hens an upper laying and roosting room and a lower scratching shed. It is furnished with nests, roosts and a cage fountain for water. The front screen is protected by a canvas cover for use in cold weather.

### No. 2 Colony Laying House

THIS house is large enough for eight hens and they will lay well, kept in confinement, especially during the winter. It is very convenient to care for, and has several very attractive features. The roof is hinged to open out, giving access to the interior. It is made in sections, is well painted, and can be bolted together in a few minutes by anyone. It is warm, well lighted and ventilated. It has a removable, sanitary dropping board and roosts, nests and water dish. The front screen is protected by a canvas cover for use in cold weather.

#### In Zero Weather

WEST MEDFORD, MASS.

*"In the fall I bought from you a Colony Laying House No. 0, and I am delighted with it. My ten pullets have been laying five or six eggs a day all through this cold weather, with the thermometer hovering around zero for a week."*

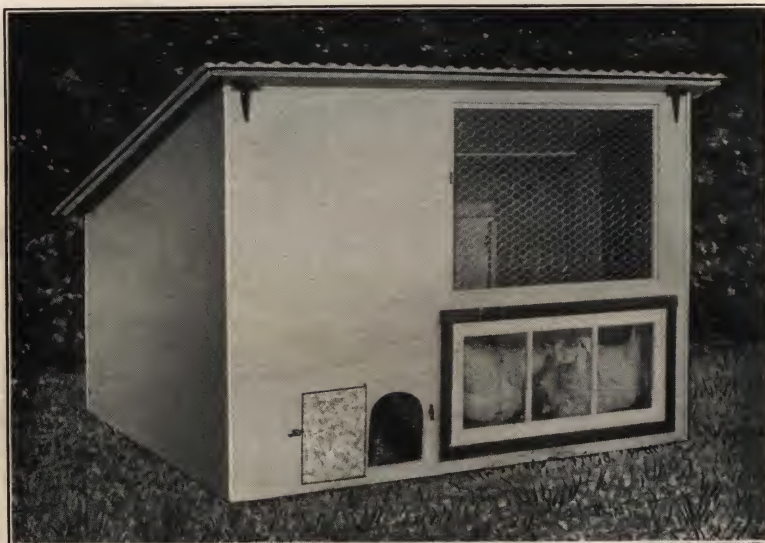
MRS. JAMES R. McDONALD.

#### Eggs at 20° Below Zero

108 FULTON STREET, NEW YORK CITY.

*I enclose you a little photograph of Colony House No. 0 which I bought from you last fall, and no doubt it is the most satisfactory house ever made. My chickens were laying at 15 and 20 degrees below last winter.*

E. F. KELLER.



WIGWARM COLONY LAYING HOUSE No. 2  
 Size 4 x 6 ft. For 8 hens. Price \$19.80  
 A 6 x 8 ft. covered yard \$8.80



## Wigwam Sectional House No. 3



No. 3 LAYING HOUSE One Unit

Size 8 x 10 ft. Price \$93.50  
Additional units or pens, each 8 x 10 ft. Price \$71.50  
Capacity 30 hens

storm frame that is hinged to hook up inside of the roof, this being the most up-to-date arrangement for a fresh air house. Sash are under screen for light and sun on floor.

The house is made of a few sections that are quickly erected by means of our special key bolts. A Unit System is used so that additional units can be added at will, partitions being furnished to divide the units into pens. Each pen is furnished complete with nests, roosts, feeders, fountain, etc. If floors are wanted they cost 20c per square foot.

(Unit System and can be added to at any time)

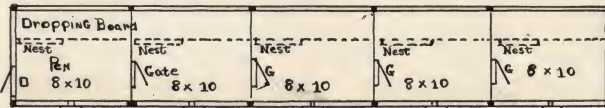
**C**ONSTRUCTION:—They are frame buildings covered with a matched red cedar siding, which is free from all defects, resembling clapboards on the outside and sheathing inside.

The exterior is painted two coats, the interior is treated with a vermin proof disinfectant, as are also the fittings. The roof is a red cedar rabbeted boarding, lined with a heavy waterproof and vermin proof fibre. About one half of the front of the house is netting protected by a canvas



INTERIOR VIEW OF THE No. 3 OR 5 SECTIONAL POULTRY HOUSE

Showing feeder, roosts, dropping boards, nests, etc. These same interior fittings are furnished our No. 4 Houses  
Price of Feeder alone \$4.00



Plan 8 x 50 ft. No. 3 house with 5 pens, each 8 x 10 ft.

### Price List

8 x 10 ft. House	1 pen	\$93.50
8 x 20 ft. House	2 pens	\$165.00
8 x 30 ft. House	3 pens	\$236.50
8 x 40 ft. House	4 pens	\$308.00
8 x 50 ft. House	5 pens	\$379.50

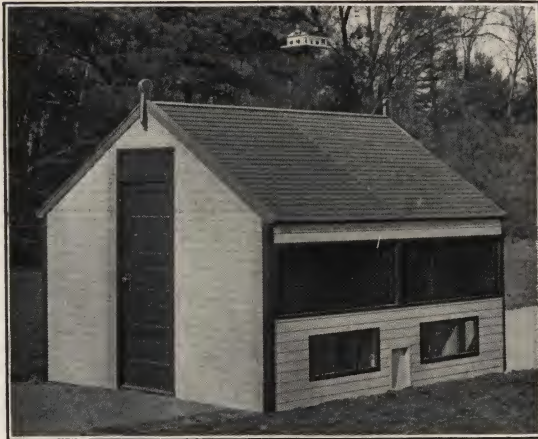
Capacity 30 hens per pen



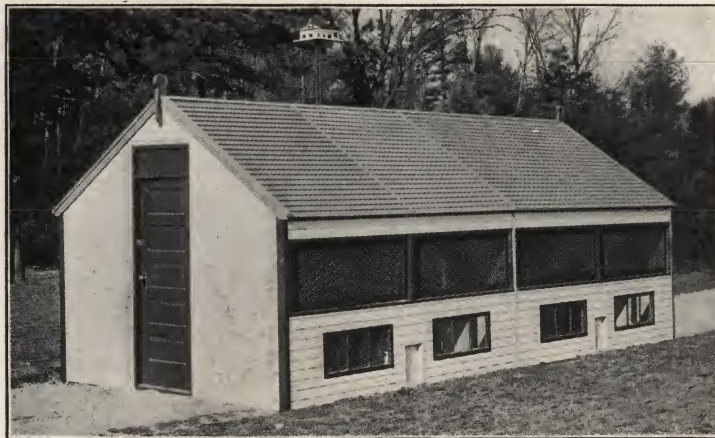
No. 3 LAYING HOUSE, five units  
Size 8 x 50 ft. Price \$379.50. Capacity 150 hens  
Made in units or pens 8 x 10 ft. each



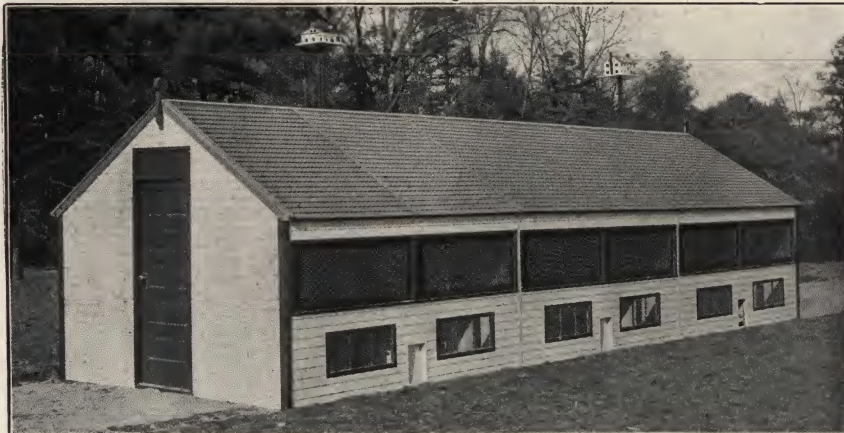
## Wigwam Sectional House No. 4



No. 4 SECTIONAL POULTRY HOUSE Price \$110.00  
First Unit 10 x 10 ft. Capacity 40 hens



No. 4 SECTIONAL POULTRY HOUSE Two Units 10 x 20 ft.  
Price first unit \$110.00 and one additional unit \$93.50. Total \$203.50.  
Capacity 80 hens



No. 4 SECTIONAL POULTRY HOUSE Three Units 10 x 30 ft.  
Price first unit \$110.00 and two additional units \$93.50 each. Total \$297.00  
Capacity 120 hens

(Unit System—can be added to)

**A** UNIT SYSTEM of construction is used in these houses, making it possible to increase their size at any time. The five pictures show from one to five units, although any number of units can be added at will. The five-unit house is the most popular, and with good care, 200 laying hens will give excellent results in this house.

Each unit is 10 x 10 feet, and when more than one unit is purchased, we furnish a partition, as shown on page 10.

*The Construction*—It is a framed building, covered with a special matched *red cedar* siding forming clapboards on the outside and sheathing on the inside. The exterior is painted two coats of the best paint, the interior is treated with a vermin proof disinfectant. The roof is covered with a *red cedar* rabbeted boarding and lined with a heavy water and vermin proof fibre.

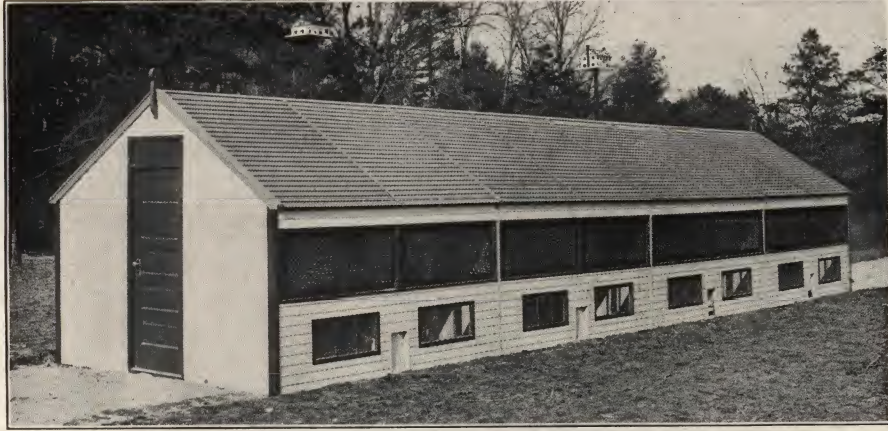
About one-half of the front of the house is netting protected by two canvas storm frames, hinged to hook up against the inside of the roof, with windows below, this being the most up-to-date and sanitary arrangement for fresh air houses.

Each unit is made up of from four to six sections which are fastened together with our special key bolts, so that two inexperienced men can easily set up a five unit building (10 x 50 feet) in a day's time.

All of the materials used are of the very best quality and will last for years. So complete are these buildings that you are put to no further expense in fitting them up. The photographs give a good idea of their appearance, although they cannot do them justice, and no matter if you buy one or 100 of our houses, they will all be of the same uniform good materials and workmanship. By this, the reader



## Wigwarm Sectional House No. 4



No. 4 SECTIONAL POULTRY HOUSE Four Units 10 x 40 ft.  
Price first unit \$110.00 and three additional units at \$93.50 each. Total \$390.50. Capacity 160 hens

can readily understand that it would be difficult to construct a more durable, practical, attractive and sanitary fresh air poultry house at any cost.

These sectional houses have been on the market now for over fifteen years and are without doubt the best of their kind to be found in either the portable or stationary type.

*Floors*—We do not supply a wooden floor

with this house but can furnish it if desired at a cost of 20 cents per sq. ft. We recommend a gravel floor.

*Interior Fittings* consist of a 10 foot detachable dropping board, two 10 foot roosts, nests and feeder in each unit as shown on page 7.

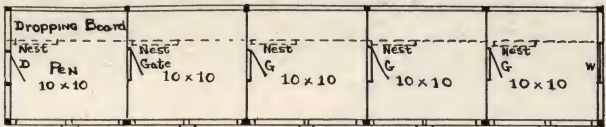
*Capacity*—With good care and proper feeding, 40 hens can be kept in each unit with excellent results.



No. 4 WIGWARM LAYING HOUSE. Price \$484.00  
5 Units 10 x 50 ft. Capacity 200 hens

- Price List
- 10 x 10 ft. House 1 pen \$110.00
  - 10 x 20 ft. House 2 pens \$203.50
  - 10 x 30 ft. House 3 pens \$297.00
  - 10 x 40 ft. House 4 pens \$390.50
  - 10 x 50 ft. House 5 pens \$484.00

Capacity 40 hens per pen



Plan No. 4 5 Units or Pens



## Interiors of all WIGWARM Poultry Houses



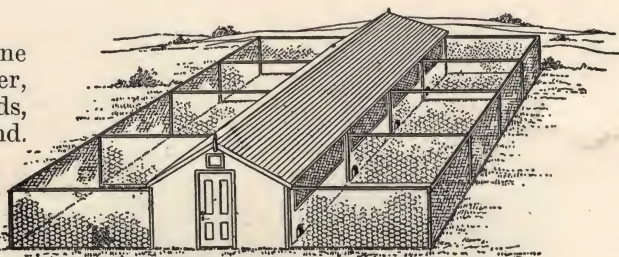
INTERIOR OF A FIVE UNIT No. 4 POULTRY HOUSE  
Producing perfect light and ventilation

ALL the WIGWARM Poultry Houses are fitted with the most up-to-date appliances, conveniently arranged and in a most sanitary form. These interior fittings are all detachable and quickly removed for a thorough cleaning or to make the pen ready for other purposes.

Cedar is used almost exclusively in these houses and is a wood that will not be infected by vermin, as all other woods are. All the lumber used is dipped into tanks of creosote preservative, increasing its durability and sanitary qualities. It is the attention we give to these details that has made the Wigwarm Poultry Houses so satisfactory to their owners and makes poultry keeping a pleasure as well as profitable.

### POULTRY YARDS

Alternating yards, that is, yards used on one side of the house a short time, then on the other, make it possible to grow oats in the vacant yards, supplying green food and renovating the ground. Hens running over the same ground, even though the yard is of good size, will soon contaminate the ground; and this system of yarding overcomes this trouble with very little difficulty. The size of the yard is 10 feet wide by 30 to 50 feet in length. We do not furnish these yards.



No. 4 SECTIONAL HOUSE OF FOUR UNITS  
10 x 40 ft. With alternating yards, each 10 x 20 ft.  
For 160 hens

THIS picture illustrates one of our No. 4 Five Unit Houses in a yard about 100 x 100 feet. The partitions are partly opened up to make one large pen 10 x 50 ft. 200 hens kept in this manner will produce good results with but little labor.

16 FAIRFIELD ST., BOSTON, MASS.

*"The Portable Poultry Houses and the Brooders which I have bought from you have given excellent satisfaction. I have several at each of my two farms and I want nothing better."*

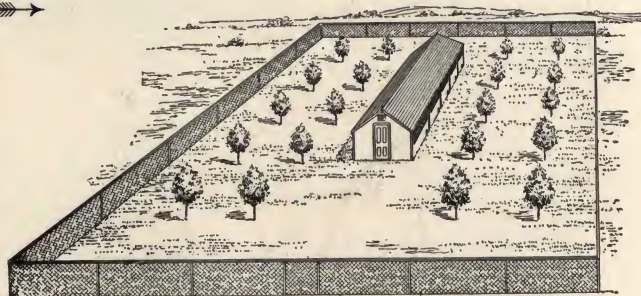
JOHN MORSE.

#### Using Two 50-foot Houses

PARKER HOUSE, NEW BEDFORD, MASS.

*"The 50-foot sectional hen house I received from you arrived in good shape and I like it. When can you deliver me in Blackstone another 50-foot house."*

ARIEL C. THOMAS.



#### Order Two Sections More

NEW YORK CITY.

*"The No. 0 Poultry House and Setting Coops you sold me last spring were very satisfactory. Please send me, as soon as possible to Mount Kisco, N. Y., two sections of your large poultry house, 10 x 20 feet."*

W. R. ADDICKS.



## Wigwarm Colony Laying House No. 5

**T**HE No. 5 Colony Laying House is made of the same materials and with the same interior fittings as the No. 3 and 4 houses. It is made in a few completed sections with door and window all fitted in place, well painted, and can be key bolted together in an hour's time by anyone. The bolting of these completed sections of this house is all that is left for you to do, for all other details are attended to before it leaves the factory. It is made mostly of red cedar and will last a life time.

*Interior Fittings* consist of a six foot detachable dropping board with two 6-foot roosts, sanitary nests and our up-to-date Poultry Feeder.

### Eggs at 20° Below Zero

EAST ST. LOUIS, ILL.

*It occurred to me that a word about my WIGWARM Colony Laying House No. 5 would be appreciated by you and therefore permit me to say, as a beginner in poultry raising in the back yard of a city lot, the egg result obtained in this house is second to none.*

*The present winter has been the most severe in many years. The thermometer during January has gone as low as 20° below zero. I have nine pullets which were practically locked up in the house most of the time and in the yard attached which is 12 x 6. From January 1 to and including January 20th, I obtained 78 eggs, from a fairly good strain of Barred Plymouth Rocks.*



WIGWARM COLONY LAYING HOUSE No. 5. Price \$60.50  
Size 6 ft. wide by 8 ft. deep. Capacity, 20 Hens

*When in need of more poultry appliances, only yours will be considered.*

*Please forward to me your late catalog on Poultry and Bird Houses.*

F. E. SCHNEIDEWIND.

## Grain, Camp or Garden Tool House

**T**HIS camp or garden house is extensively used for many purposes; for camps, kitchen or sleeping rooms in camps, garden tool-house, grain house, storage room or shop.

It is similar to all our portable houses, and will last a lifetime. It is practical for use winter and summer. Size 10 x 10 ft. and can be added to in units of the same size. It has a glass door with two windows at one side and one opposite the door. A plank bench runs along the side under the windows. If two windows are desired on opposite side add \$8.00 to price.



Size 10 x 10 ft. Price \$133.00

If corner trellises are not wanted deduct \$8.00. Additional 10 x 10 units to add to this house \$105 each

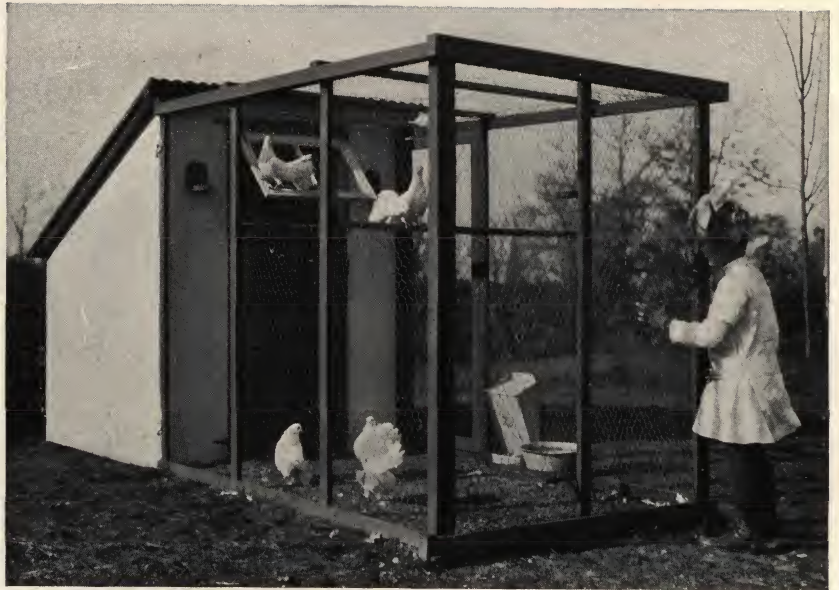


## Wigwarm Pigeon House No. 1

**T**HIS pigeon house, with a flight cage attached, is practical for from five to ten pairs of pigeons. We furnish nesting room for five pairs, but more can be easily added. We also furnish an automatic feeder, a water dish, and ample perches.

There is a gate leading into the flight cage and a door with a window leading into the house.

The house is complete in every detail and shipped to you in but six sections, in a form that reduces the transportation charges to a minimum. It is easily put together in a half hour's time.



WIGWARM PIGEON HOUSE No. 1. Price complete \$40.50  
Size 4 x 4 ft. x 5 ft. high Cage, 4 x 6 ft. Capacity, 5 to 10 pairs

## Wigwarm Pigeon House No. 2

**T**HIS pigeon house has the cote and flight cage under one roof making it very convenient for the attendant. At the rear is a set of nest compartments completely housed in and protected by a removable front which makes it convenient to clean.

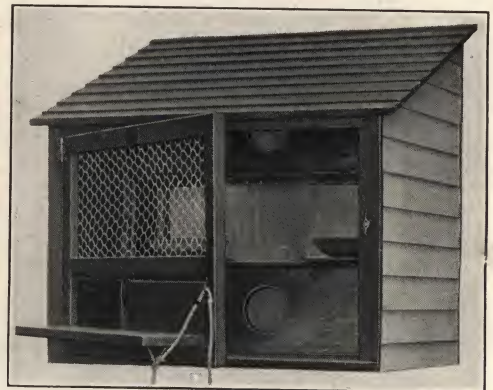
It is made in a few completed sections and is quickly bolted together. The exterior is well painted and the interior treated with a vermin proof disinfectant. The price quoted includes nests, feeder and water dish, all that is necessary.



WIGWARM PIGEON HOUSE No. 2. Price \$44.00  
Complete set of interior fittings included  
Size, 6 x 6 x 7 ft high For 20 pigeons

## Wigwarm Wall Dove Cote

**T**HIS pigeon house is especially designed to fasten to a building any distance up desired. A cord controls the flight board to release the pigeons. The interior is fitted with separate compartments with fibre nests for three pairs of birds. It is made of red cedar that is sanitary and durable and will look attractive and practical attached to any building. The front of each compartment is removable for cleaning. The roof is our special red cedar roofing boards with a fibre lining that will last for years and is always absolutely weather proof.



WALL DOVE COTE. Price \$19.80  
Fitted for 3 pairs of pigeons Size, 2 x 3 ft.



## Wigwarm Kennels

### Wigwarm Kennel No. 1

**T**HIS Kennel is for one dog of almost any size. It is well ventilated and easily kept in a most sanitary condition, the floor being easily detached for cleaning. It is made of durable materials and is very attractive in any surroundings. The matched white pine sides and the red cedar roof make it absolutely storm proof.

There are but seven sections used in making up this kennel, which can be easily put together by anyone in a few minutes' time. It is shipped "knocked down" in such form as to reduce the transportation charges to a minimum.

It would be difficult indeed to make a more durable, comfortable and attractive kennel at any cost.



WIGWARM KENNEL No. 1

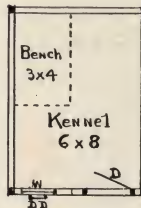
Two sizes. No. 1. 2½ x 4 ft. Price \$16.50  
No. 2. 3½ x 5 ft. Price \$22.00

### Wigwarm Kennel No. 3

The No. 3 Kennel is a neat, sanitary and practical building, built of red cedar that will last for years and has a good hard pine floor. The interior is furnished with a detach-



No. 3 KENNEL. Price \$71.50  
Size, 6 ft. wide, 8 ft. deep



Plan No. 3  
Kennel

able bench and all interior woodwork is creosoted, making it sanitary and durable, and easily cleaned. The exterior is painted.

The front has a regular double hung window, protected inside by netting. Both upper and lower sash open, giving good ventilation. Below the window is the dog door and the large panel door at right of windows is fitted with a good mortised lock. This building makes a warm, durable kennel for use the year round.



No. 4 WIGWARM KENNEL

No. 4 Wigwarm Kennel of Robert Edson, Esq., the well known actor, showing Mr. Edson and his police dogs at Sag Harbor, Long Island, N. Y.  
Details upon application





DUTCH COLONIAL BIRD HOUSE  
18 x 36 inches—32 rooms—16 ft. Pole  
Price \$30.00

### ATTRACTING THE WILD BIRDS

UP to within recent times many who provided care, food and shelter to our wild birds did so from humanitarian motives and the pleasure to be had from having them in their grounds and around their homes. But today we are realizing more and more the great value of the wild birds in protecting our shrubs, trees, orchards, crops, etc., from the awful horde of insect pests which invade our gardens and cause losses of untold amounts each year; and so the wild birds are now most enthusiastically catered to and sought after creatures.

In winter we have only to offer food to the birds to attract them. Shelter and protection will keep them. In summer

they must have protection and a home—nature

will provide food in the summer, which consists mainly of insects, bugs and worms.

They must have a place to drink and bathe both in summer and winter. Birds long absent from a neighborhood will find their way back soon after provisions for their comfort are made. There is no bird that can be so readily increased in number, in many localities, by putting up nesting houses for them, as can the purple martin. But the list of birds that can usually be attracted to our homes in the north-eastern and middle states is long and varied, and in-



COLONIAL BIRD HOUSE  
16 x 24 inches—28 rooms—16 ft. Pole  
Price \$25.00

## Hodgson Bird Houses

OUR bird houses are attractive and practical. Being well made, mostly of red cedar, and well painted, they are durable. They can be easily opened up or taken apart for spring house cleaning, which should be done each season before nesting time. Many of the larger bird houses represent the several types of old New England homesteads so well known and appreciated, and add much to the attractiveness of any grounds.



BIRD VILLA. Price \$15.00  
14 Rooms with 16 ft. Pole  
Size 24 x 28 inches, including a Covered  
Porch Which Surrounds the Entire  
House





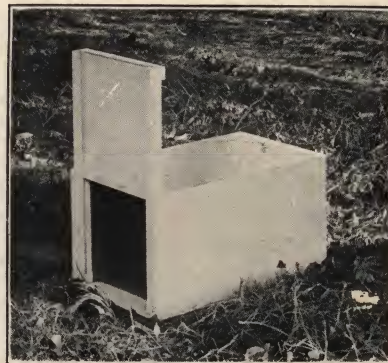
OLD HOMESTEAD BIRD HOUSE  
Price \$12.00  
16 x 18 inches—10 rooms—16 ft. Pole



SUET SHELTER  
95c—\$9.00 per dozen



No. 6. BLUE BIRD HOUSE  
4 Rooms, 10 ft. Pole  
Price \$5.00  
For Blue Birds, Wrens, Tree and Barn Swallows



TRAP FOR BIRD ENEMIES  
Price \$4.00  
Cats, Squirrels, Weasels, Skunks, Etc.  
Automatic. Locks When Closed. Does not Harm Animal



BUNGALOW BIRD HOUSE  
6 rooms with 16 ft. pole  
Price \$12.00  
Size 24 x 28 inches including porch



WINDOW FEED AND SUET SHELTER  
Price \$1.00—\$9.00 per dozen



No. 5. WREN HOUSE  
Price \$2.50  
2 Rooms—10 ft. pole  
For Blue Birds, Wrens, Tree and Barn Swallows

cludes blue birds, wrens, red winged black birds, cat birds, fly catchers, chickadees, flickers, cardinal birds, finches, juncos, nuthatches, king birds, orioles, scarlet tangers, thrushes, warblers, and others equally well known.

The placing of your bird houses and food shelters has much to do with their success. Houses for the sociable martins are usually placed in an open space near dwellings, but not within twenty feet of buildings or trees; blue bird houses in orchards having scattered trees; wrens like to build their homes in houses placed in shrubbery; the well-loved robin likes to find her open nesting box in the large spreading tree, under the eaves of porches, or in a chimney corner; nuthatches and most of the woodpeckers prefer to have their homes in the woods, although the friendly flicker and red-headed woodpecker like to nest in houses placed among scattered trees; swallows nest in open spaces; crested flycatchers, chickadees, finches are not particular, but will build where most convenient.





REVOLVING FEED SHELTER  
 With 7 ft. Pole. Size 24 x 36 inches  
 Price \$6.50

Care should be taken to face the houses away from the prevailing stormy weather winds.

The homing instinct is strongly developed in birds and many may be relied upon to return season after season to enjoy the same comforts and protection afforded them by their human friends.

The houses should be thoroughly cleaned out each year before the birds are ready for nesting.

The birds can get along very comfortably in summer without seeking food from their human friends, but in winter, when the frozen insects, eggs, seeds of weeds, etc., on which they naturally feed, are covered by snow, it is essential that food be placed where they can find it else many of them will perish.



BIRD BATH  
 Price \$9.00  
 Size 20 x 20 inches Copper lined

We are often asked what to feed the birds.

Almost anything eatable will keep them from starving. They like cracked corn, cracked rice, grain, scratch feed, bread crumbs, chaff from the barn floor, hemp and sunflower seeds, mixed bird seeds, etc. Nut meats are eagerly taken; also suet and fats of all kinds.

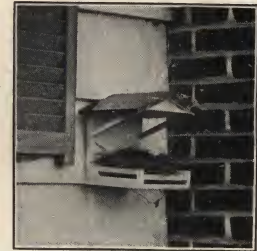
Try coaxing some of the birds to feed from your window sills, using our window feed and suet shelters. It will surprise you to see how tame they will become, especially the chickadees and nuthatches. By offering them a broken nut, a piece of doughnut, some suet, many people can coax these birds to feed from their hand regularly each day.

Protect the wild birds, feed them, house them, water them, and in doing this you are carrying on a fine work that will return to you payment a hundred fold.

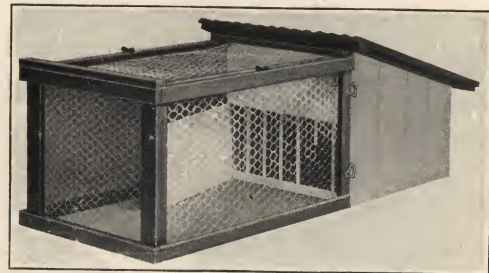


Tree Box No. 3 (top picture).  
 Tree Box No. 4 (center picture).  
 Bottom picture shows box open to clean

No. 3 Box is for House Wrens, Chickadees, Nuthatches, etc.  
 No. 4 Box for Blue Birds, Wrens, Woodpeckers, Tree Swallows, etc.  
 Price \$1.25—\$10.00 per dozen



ROBIN'S NEST  
 \$1.00—\$9.00 per dozen



PHEASANT INCUBATING COOP. Price \$6.00  
 Size of Coop, 24 x 24 inches. Yard, 24 x 36 inches.  
 This Coop is of the Most Up-to-date Type for Hatching Pheasants. We Furnish the Interior with an Open Nest Box Divided into Two Parts, Upper and Lower, Forming a Shallow Nest When Setting and a Deep Nest to Protect Newly Hatched Birds.



**Digitized by**



**ASSOCIATION  
FOR  
PRESERVATION  
TECHNOLOGY,  
INTERNATIONAL**  
[www.apti.org](http://www.apti.org)

**BUILDING  
TECHNOLOGY  
HERITAGE  
LIBRARY**

<https://archive.org/details/buildingtechnologyheritagelibrary>

From the collection of:

Alan O'Bright



# HODGSON PORTABLE HOUSES

**T**WENTY years ago we started in a humble way in a small shop. Today we have a spacious, daylight factory equipped with the most modern machinery and operated by men who have made portable houses a life long study. With this equipment and training, the houses we are able to turn out have won for us an undisputed reputation for being practical, durable and artistic, with a decided sense of individuality and refinement that appeals to all who appreciate these qualities. The fact that 75 per cent of our business each year comes through customers who have used our houses for years, proves that our efforts in building a portable house with these features have been appreciated.

They are to be found on the finest estates in this country, being used for cottages, garages, playhouses, garden houses, overflow houses, poultry houses, etc. Send for our catalog. It tells you all.



Cottages in many styles and sizes



Garages for one or more cars

## State House, Boston

"I want to thank you for your generous service in the construction, at so reasonable a price, and with free contributions of your own, of the group of cottages on the Common for the Food Administration, the Red Cross, and other Allied organization.



Play Houses in many styles and sizes

"The promptness with which your men executed the work, and the delightful neatness of your cottages have brought out admiration from everybody.

"I am sure you will have been glad to observe how successful the cottages have proved in actual use. They are a very important element in the food work, and we appreciate your services very highly indeed."

H. B. ENDICOTT,

Food Administrator for Massachusetts.



A few of the Hodgson Portable Houses on Boston Common used for War Work